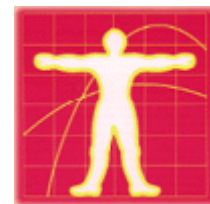


# INTERNATIONAL SOCIETY FOR OCCUPATIONAL ERGONOMICS AND SAFETY



INTERNATIONAL MEMBER-AT-LARGE  
BIOSKETCH

---



## **MURRAY GIBSON**

PE, CPE

Saturn Ergonomics  
Auburn, AL

[Email](#)

[Website](#)

Murray Gibson is International Member-at-Large for the International Society for Occupational Ergonomics and Safety (ISOES). He is working to complete his PhD in Industrial & Systems Engineering at Auburn University. Murray is a licensed PE (Professional Engineer - Industrial) and a CPE (Certified Professional Ergonomist) with extensive experience applying ergonomics at the plant & corporate level, and as a consultant in over 200 companies.

Murray is Founder of Saturn Ergonomics, an ergonomics technology development and consulting company.